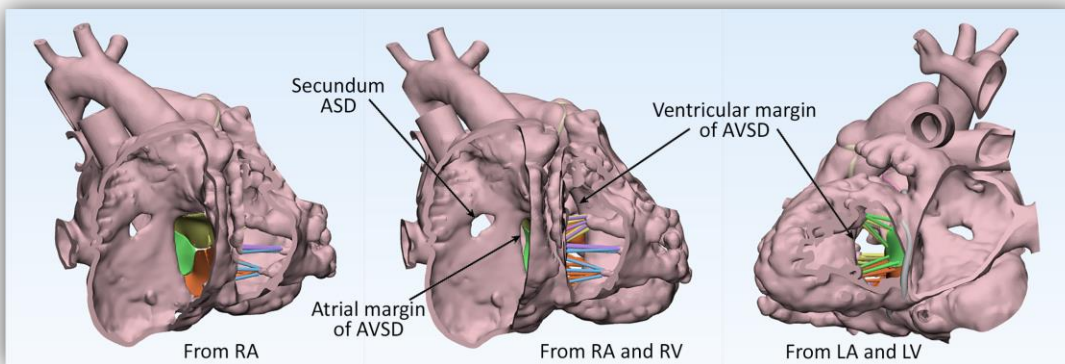
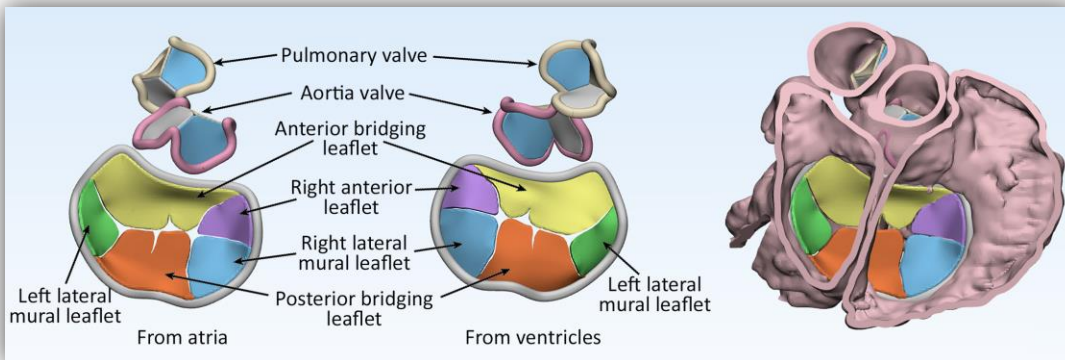
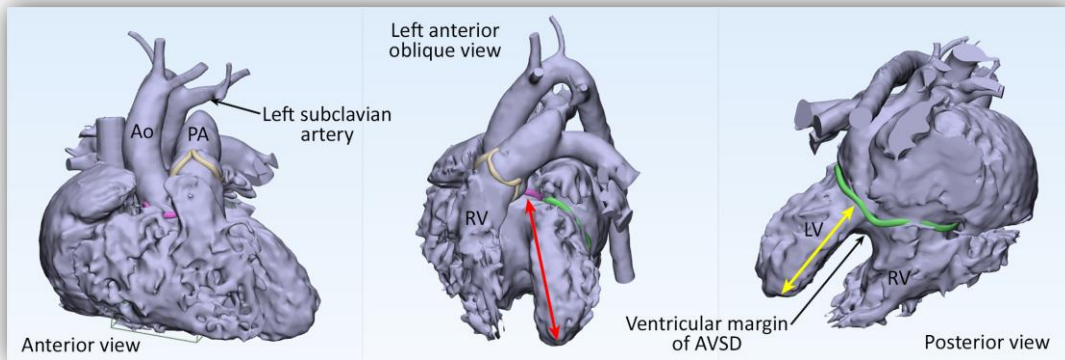
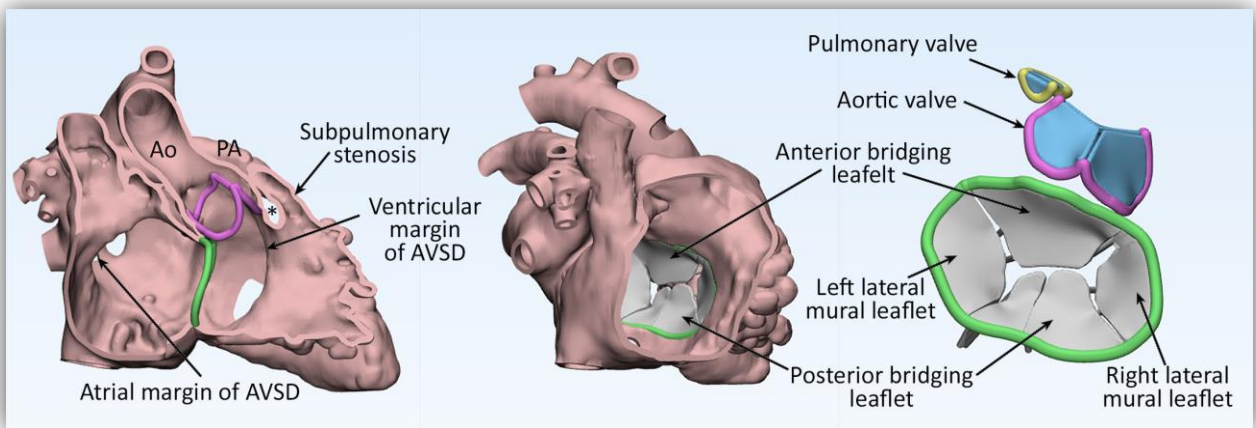
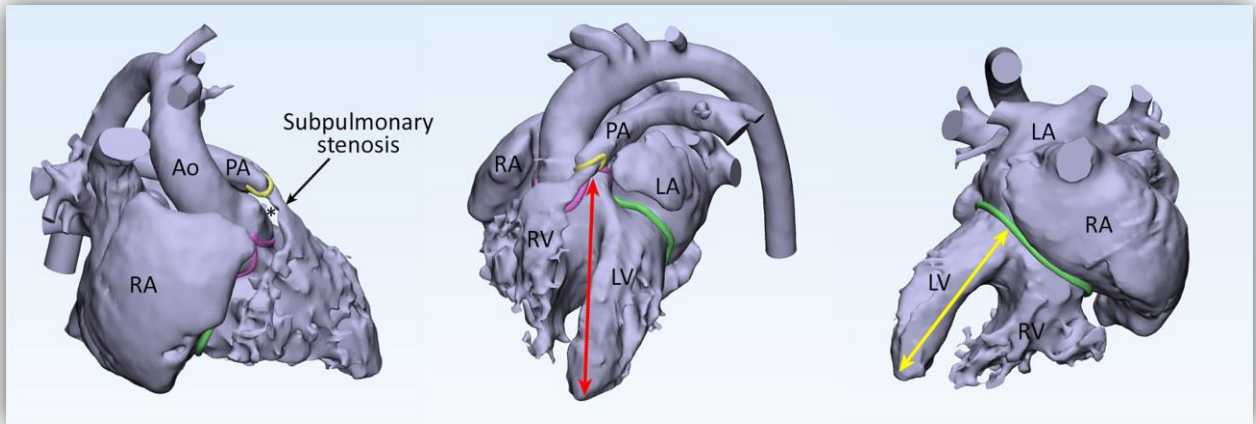


AVSD 1. Atrioventricular septal defect with a common orifice and both interatrial and interventricular communications.



- ♥ Short inlet (yellow double headed arrow in cast mode on right) and elongated outlet of the left ventricle (double headed arrow in cast model in middle).
- ♥ Common atrioventricular junction with unwedged position of the aortic valve.
- ♥ 5 atrioventricular valve leaflets with a common orifice
- ♥ Free floating anterior and posterior bridging leaflets with interatrial and interventricular communications.
- ♥ Right aortic arch with aberrant origin of left subclavian artery

AVSD 2. Atrioventricular septal defect with tetralogy of Fallot.



- ♥ Short inlet (yellow double headed arrow in cast mode on right) and elongated outlet of the left ventricle (double headed arrow in cast model in middle).
- ♥ Common atrioventricular junction with unwedged position of the aortic valve.
- ♥ 4 atrioventricular valve leaflets. Vestigial leaflet between anterior bridging and right lateral mural leaflet. A common orifice
- ♥ Free floating anterior and posterior bridging leaflets with interatrial and interventricular communications.
- ♥ AVSD extending toward the aortic valve with leftward anterior malalignment of the outlet septum (asterisk) in relation to the rest of the septum. Severe subpulmonary stenosis and small pulmonary valve annulus.